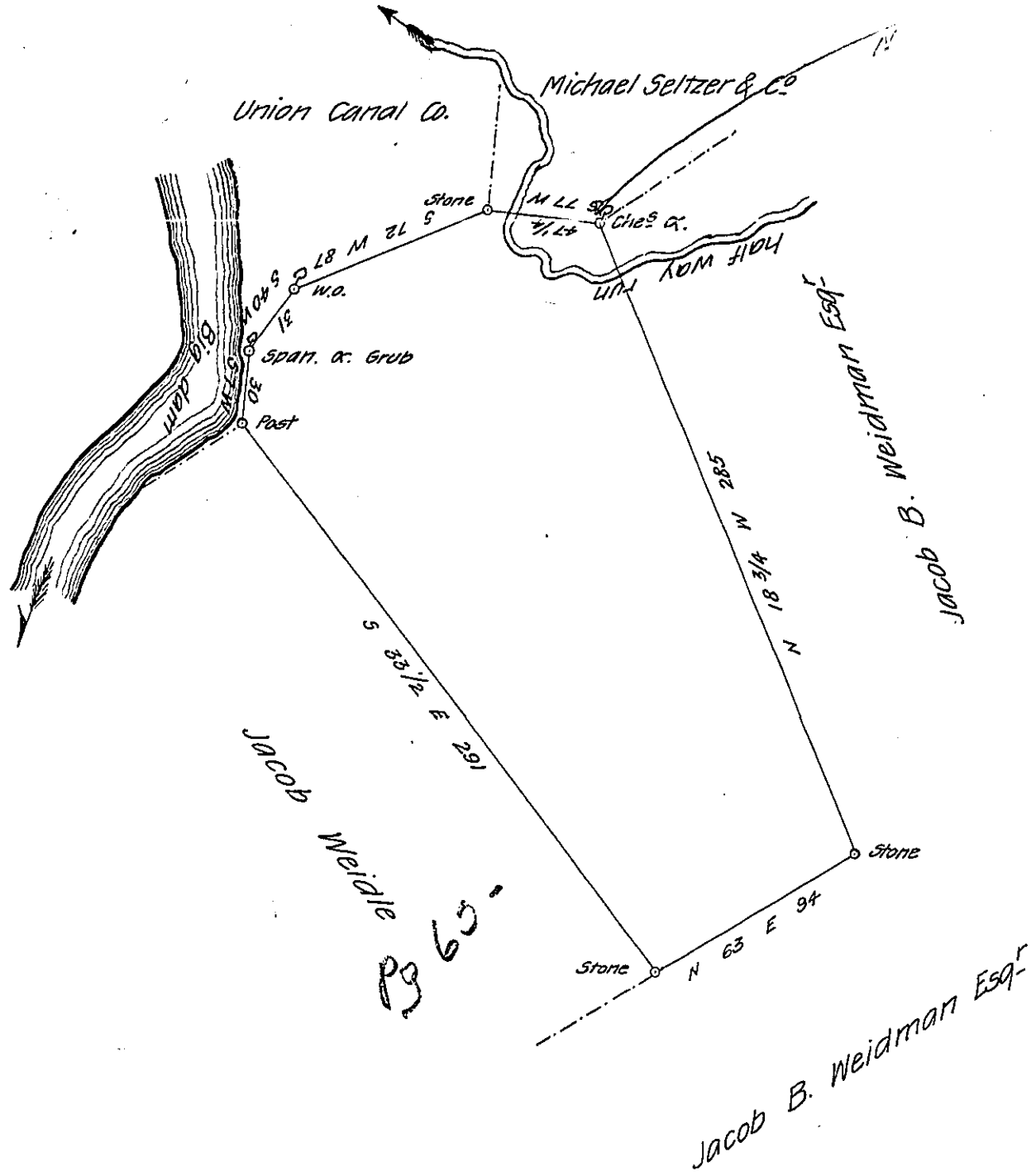


FORM NO 1.



The above described tract of land situate in Swatara & Bethel Townships in the County of Lebanon containing two hundred and forty-seven Acres and eighteen perches and the usual Allowance &c.

Surveyed the 17th day of Novem^r 1836 in pursuance of a Warrant dated the 29th day of August 1836 Granted to John A. Weidman

Ezekiel Cherington D.S.

To John Taylor Esq^r

Surveyor General of Penn^a

IN TESTIMONY that the above is a copy of the original remaining on file in the Department of Internal Affairs of Pennsylvania, made conformably to an Act of Assembly approved the 16th day of February, 1833, I have hereunto set my Hand and caused the Seal of said Department to be affixed at Harrisburg, this twenty sixth day of August 1907

Henry Houck
Secretary of Internal Affairs.